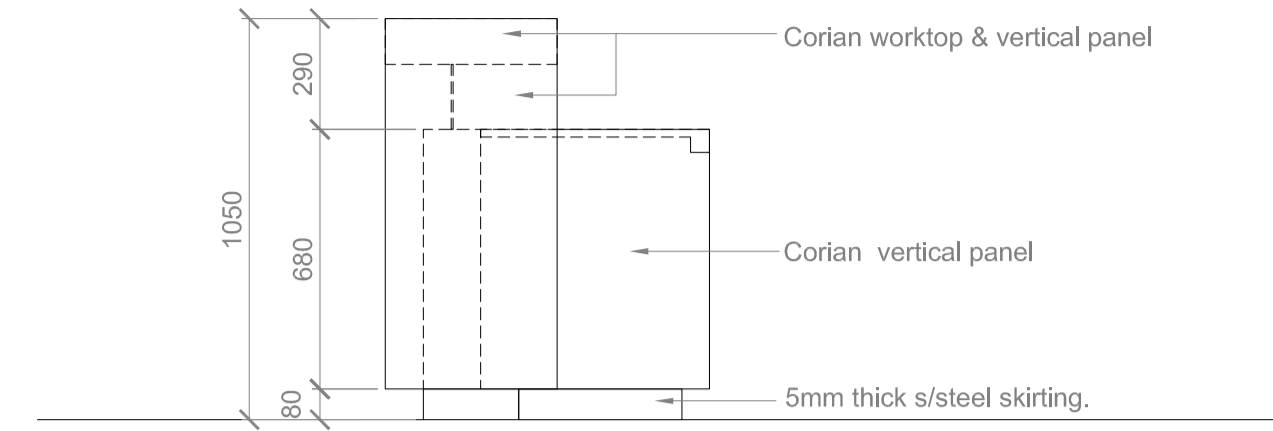
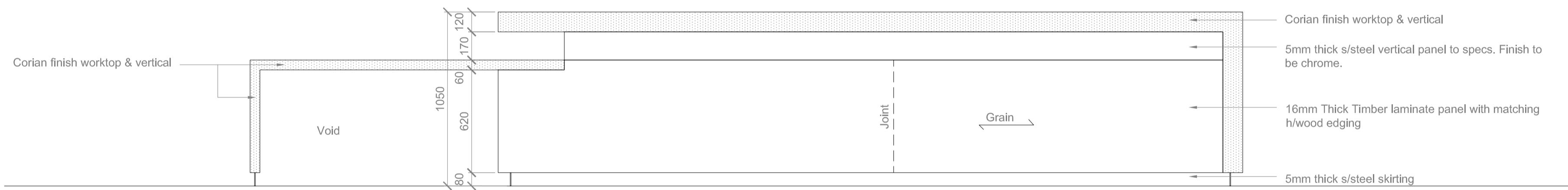


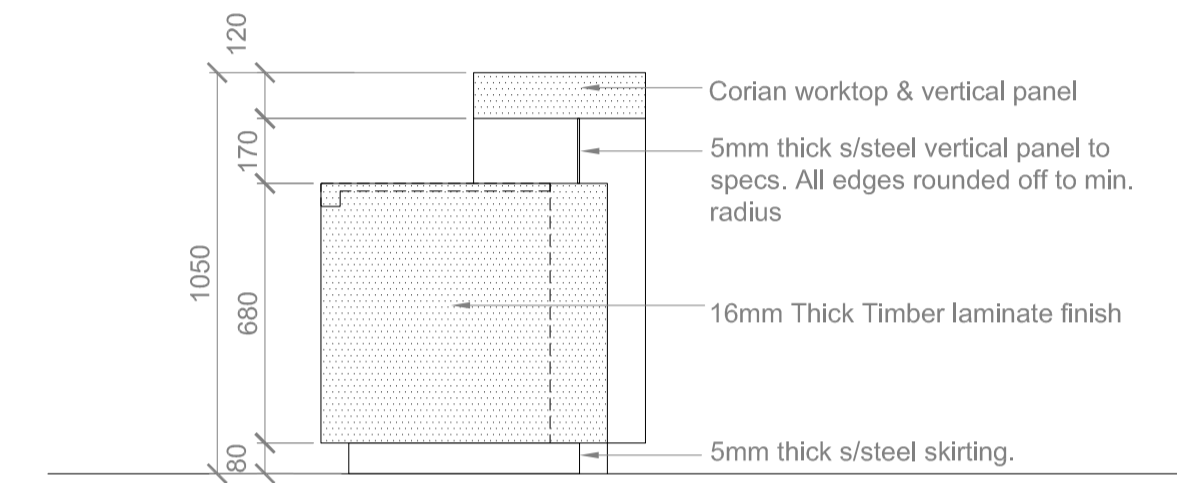
1 Elevation
Scale 1:20



2 Elevation
Scale 1:20

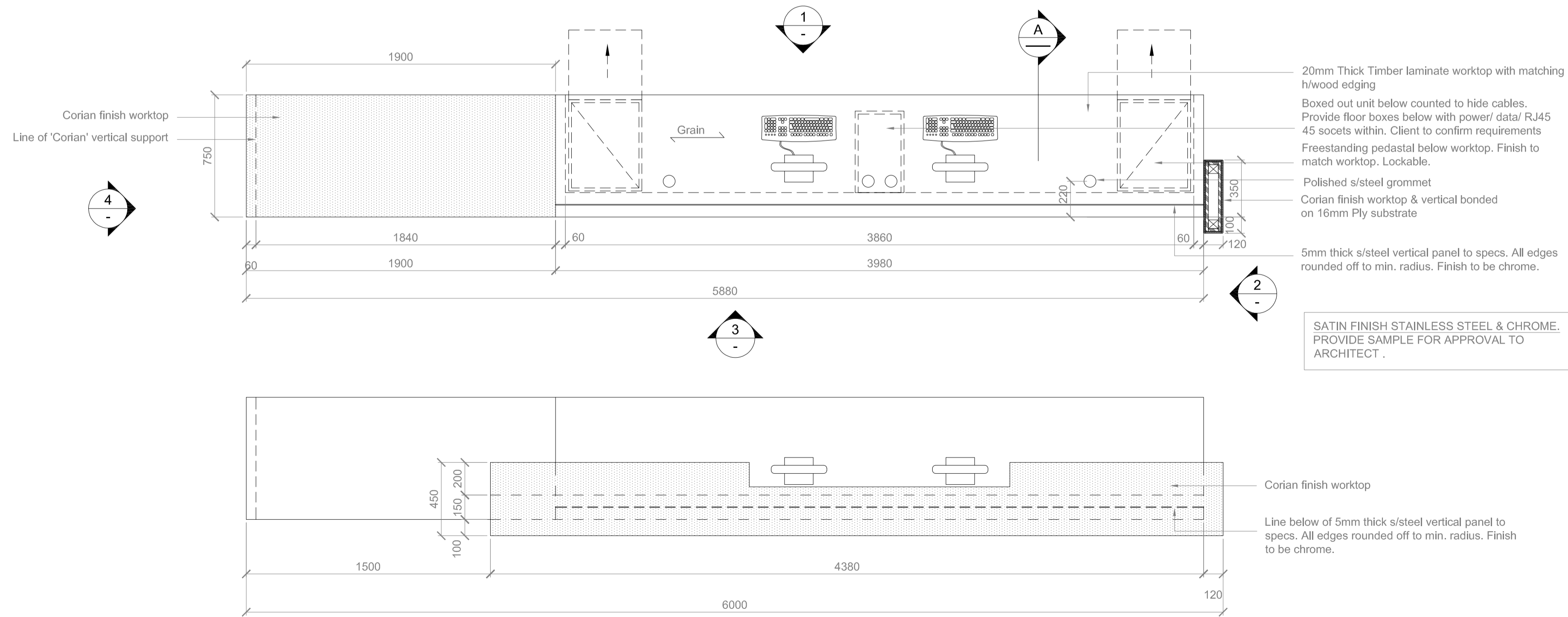


3 Elevation
Scale 1:20

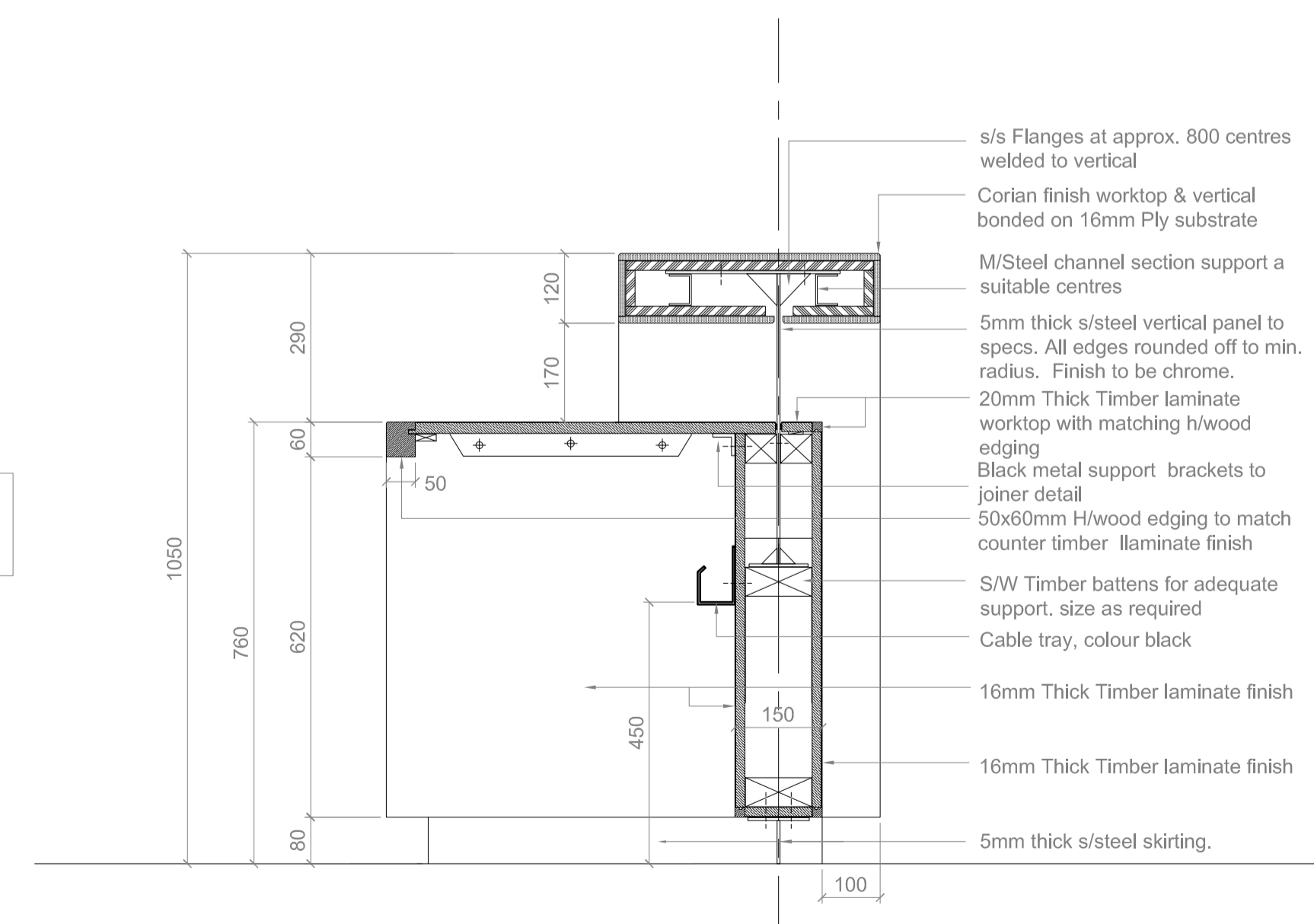


4 Elevation
Scale 1:20

Note:
-



1 Plan
Scale 1:20

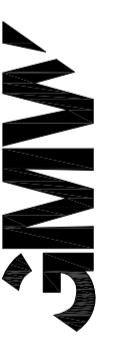


A Section
Scale 1:10

Key Plan

GMW Architects

PO Box 1613 239 Kensington High Street
London W6 6SL www.gmw-architects.com
T+44 (0)20 7837 8020 F+44 (0)20 7837 5815



Project
**Network Rail
National Centre
Milton Keynes**

Drawing Title
**Central Atrium Area - B3
Plans, Elevations, Sections
IM / FM Help Desk**

© GMW Architects Do not remove this panel from the drawing
No dimensions to be scaled from this drawing
Report all errors and omissions to the Architect
Dimensions to be checked on site before fabrication

| | | | |
|----------------------------|---------------------------|-----------------|-----------------------|
| North | Sheet A1 | Scale Varies | Drawn VM |
| | Date 01/03/10 | | Checked SW |
| Project no. 3996 | Drawing no. 857 | | Revision T1 |

J7